

GOLF & LAND DESIGN



Contents:

- 4. Introduction
- 6. Hans-Georg Erhardt
- 6. Hans-Georg Erhardt Designed Golf Courses
- 8. Golf Courses
 - 10. Golf Courses in Play
 - 12. Other Interesting Golf Courses
- 14. Range of Services
 - 18. From sketches to Materplan
 - 20. Routing plan and safety buffers
 - 22. Grading and conceptual drainage
 - 23. Staking plan and topography analysis
 - 24. Root zone media
 - 25. Grassing plan
 - 26. Cut & Fill
 - 27. Irrigation
 - 28. Lighting plan



- 29. Green Details
- 30. Bridge Details
- 31. Lake edge treatment
- 32. Bunker details
- 35. Masterplans
- 52. Visualisations
 - 54. 3D Visualisations
 - 61. Simulator screenshots
 - 68. Play strategy
 - 70. Photoshop images
- 72. Gallery
- 84. Contact Us



Introduction



Philosophy

"Golf is, in part, a game; but only in part. It is also in part a religion, a fever, a vice, a mirage, a frenzy, a fear, an abscess, a joy, a thrill, a pest, a disease, an uplift, a brooding, a melancholy, dream of yesterday, and a hope for tomorrow." - New York Tribune (1916)

In order to include all these facets in golf planning and to be able to meet the expectations of our Client, it is clear to us that planning must be seen as a dynamic process. Planning is for us an ongoing dialogue, so we see our planning process as a puzzle to build on, rather than a rigid "one-size-fits-all" template. The competence of the team, solid technical and professional knowledge, the many years of experience, excellent co-operative teamwork in an internal office network, allow us to give our clients the comfort that we understand his or her planning desires - these are the pillars of our work.

Professional knowledge, experience, application, motivation and a symbolic functioning work climate for all concerned, offer the client an optimum solution at the best possible price.

Office Location

Golf & Land Design's main office is located in Steyr, Austria, one of the oldest and most beautiful historic cities in the country with a lot of tradition in industry and craftsmanship. Since March 2006 we have been working in our new, more spacious and totally modernised town office, which is centrally located and easily accessed. It also has the advantage of offering unlimited free parking to all our clients and employees.

Office Structure

At the moment a team of golf designers and landscape architects are working on projects in Europe, Africa, America and the Pacific Region. However, our small structure is well organized, highly efficient and well trained. To remain a leading design office in the golf-industry, Golf & Land Design puts great emphasis on in-house training as well as a permanent process of improving all typical work flows.

After years of searching for a good golf-design-software and not finding one on the market, we decided to develop a special golf course design software ourselves and for our own purposes. Golf & Land now owns a series of special programs, tools and applications, which cut down office time spent on a design job dramatically and allows us to do design work, that so far just could not be done on CAD-stations.

Hans-Georg Erhardt



After a short apprenticeship in landscaping and his studies in Landscape Architecture, Hans-Georg Erhardt started a Landscape Architectural practice in Linz in 1982, Austria, as a self employed landscape architect, concentrating on high end site planning and landscape design work of all calibre. He is a member of the Austria Society of Landscape Architects (ÖGLA).

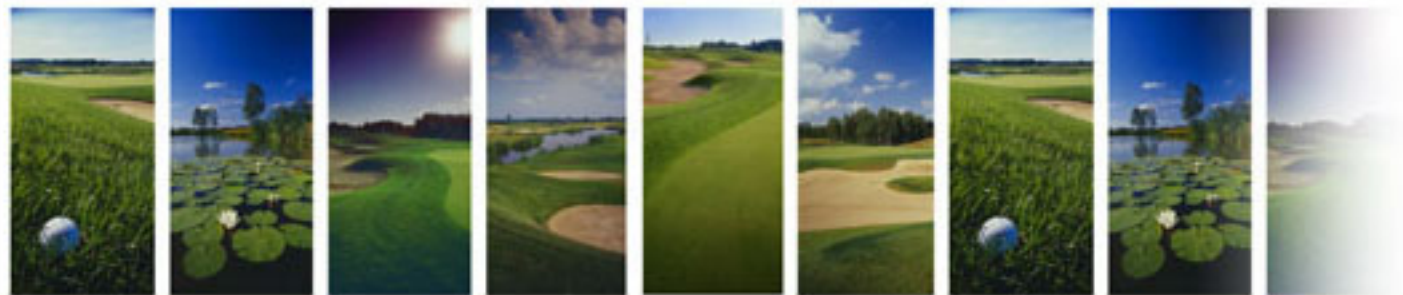
One of his most interesting professional experiences was teaching and lecturing at two universities. For many years, Hans-Georg Erhardt was in charge of a basic education in landscape architecture and the University of Fine Arts / Kunsthochschule in Linz, Austria, as well as all technical training and education for landscape architects at Munich Technical University.

In 1986 Hans-Georg Erhardt turned to golf course design and has specialised in this field ever since. He is a member of the European Institute of Golf Course Architects (EIGAC) and was one of the founding members of the European Society of Golf Course Architects (former ESGA), which joined with the British Institute (former BIGCA) several years ago thus forming the European Institute.

Golf Courses designed by Hans-Georg Erhardt

A	no. holes	practise facilities			
		Driving Range	Putting & Chipping Green	Golf Academy	Par 3 Short Course
GC Fontana	18				
GC Schloss Schönborn	18				
Thermen Golf Loipersdorf	Redesign 9 Extension 9				
Tillysburg GC Linz / St. Florian	18				
GC Donnerskirchen, Neusiedlersee	18				
GC Süssenbrunn, Wien	18				
GC Selterheim, Klagenfurt	Redesign 18				
Böhmerwald Golfpark Ulrichsberg	18				
Himberg Colony GC	36				
GC Wörthersee Velden	Redesign 18				
GC Ottenstein	9 Extension 9				
GC Leopoldsdorf	9				
Tiroler Zugspitz Golf	9				
Golf Park Metzenhof	9				
Bad Tatzmannsdorf Golf Academy	9				
Warmbad Villach Golf Academy	9				
Golf Center Linz	9				

CZ	no. holes	practise facilities			
		Driving Range	Putting & Chipping Green	Golf Academy	Par 3 Short Course
Beskyd Golf Trinec Ropice	18				
GC Austerlitz Slavkov u Brna	27				
Berovice GC	18				
D					
		Driving Range	Putting & Chipping Green	Golf Academy	Par 3 Short Course
Nürnberg Playmobil Fun Golf					
H					
		Driving Range	Putting & Chipping Green	Golf Academy	Par 3 Short Course
Pannonia GC Mariavölgy	18				
PL					
		Driving Range	Putting & Chipping Green	Golf Academy	Par 3 Short Course
Rosa Private GC Czystochowa	18				
Amber Baltic GC	18				
SK					
		Driving Range	Putting & Chipping Green	Golf Academy	Par 3 Short Course
Welten GC Bac	18				
Velka Lomnica GC (in co-operation with Munka)	27				



Golf Courses

Golf Courses in Play

Golf Courses 18 Holes (Championship & Membership)



GC FONTANA



ROSA PRIVATE GC



THERMENGOLF
LOIPERSDORF



PANNONIA GC



WELTEN GC



COLONY GC
HIMBERG



SCHLOSS SCHÖNBORN GOLF



BESKYD GOLF
TRINEC



TILLYSBURG
LINZ GC



GOLF PARK
METZENHOF



BAD TATZMANNSDORF



PLAYMOBIL FUN PARK

Other Interesting Golf Courses

PISCHELLO GC, ITALY



HASSELFELDE GC, GERMANY



SCHLOSS PICHLARN, AUSTRIA



UMAG GC, CROATIA



RUSGOLF, RUSSIA



HEVIZ, HUNGARY



SAMANA, DOM. REP.



MALLORCA GC, SPAIN



UTSUNOMIYA GC, JAPAN



GOLF PROJECT HYERES, FRANCE



D'AZEMMOUR GC, MAROCCO



EL ALAMEIN GOLF RESORT, EGYPT



LUXOR GC, EGYPT



CALEDON GC, SOUTH AFRICA



Cooperation Partners

Golf Courses in Play

Leading Golf Courses of Austria

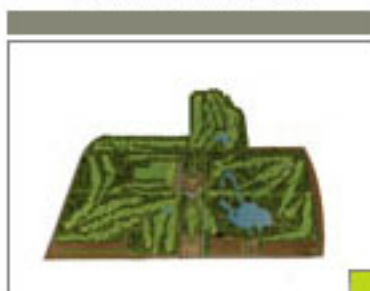
FONTANA GC



SELTENHEIM GC



SCHÖNBORN GC



GUTENHOF GC



DONNERSKIRCHEN GC (AUT)



VELDEN GC (AUT)



BÖHMERWALD GC (AUT)



Graham
MARSH

Tony
JACKLIN

TREVOR
IMMELMAN

DYE
Design

Planning Phase

EAGLE PINE RESORT (CYP)



OLD SECRET VALLEY (CYP)



NEW SECRET VALLEY (CYP)



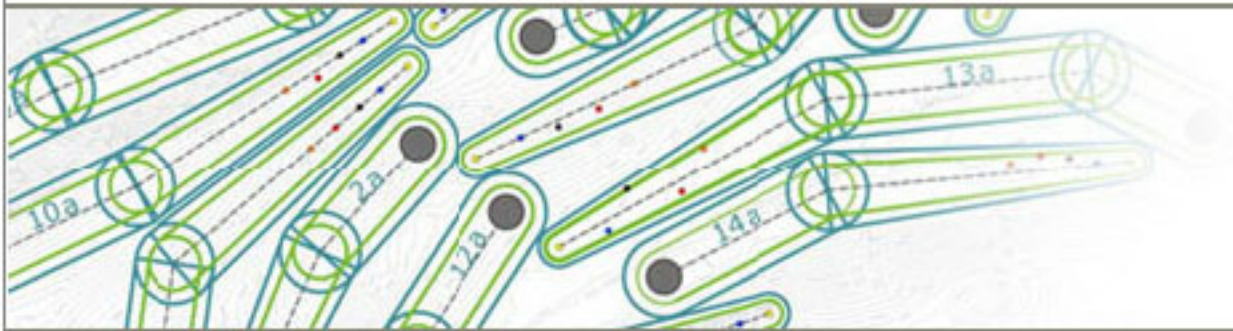
Not realised

CALEDON GC (RSA)



CARRICK
Design

Kurt
ROSSKNECHT



Range of Services

Range of Services

Golf & Land will provide a complete package of golf architectural services to our clients - we do not offer part services only. Our scope of work typically comprises services such as:

- Initial Site Visits and Site Evaluation
- Golf Resort Zoning and Land Use Plans
- Routings
- Golf Course Cost Estimates
- Housing Areas and Access Schemes
- Preliminary Golf Course Layouts
- Golf Course Master Plans
- Basic Thematic Plans for Golf Course Permitting Phase
- Working Drawings and Typical Calculations
- Details and Feature Drawings
- Bill of Quantities, Quantity Take-Offs
- Specification and Tender Documents (German Standards / Imperial Standards / Lump Sum Tender)
- Negotiation and Construction Contracting
- Architect's Site Supervision
- After Services in the Growing-In / Pre-Opening Phase



Optional and outside our regular scope of works we can offer special services such as:

- 3-D-Visualisation
- Score Cards and Birdie Book Illustration
- Golf Course Safety Analysis
- Golf Course Simulation



Range of Services

Sketches



AutoCad Plan



Photoshop Masterplan



Golf Course in the Slovak Republic

Range of Services

Routing plan & safety buffers



SCORECARD REGULAR COURSE

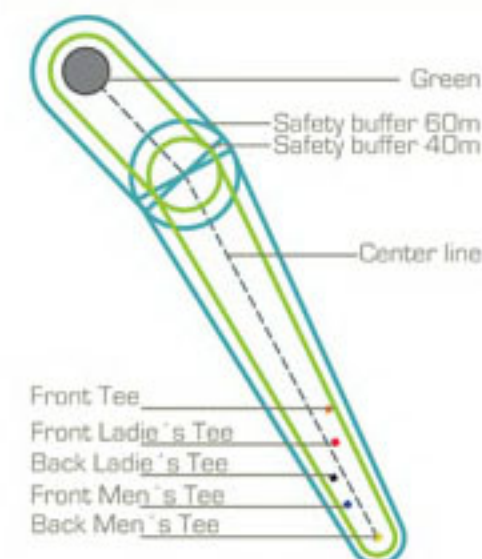
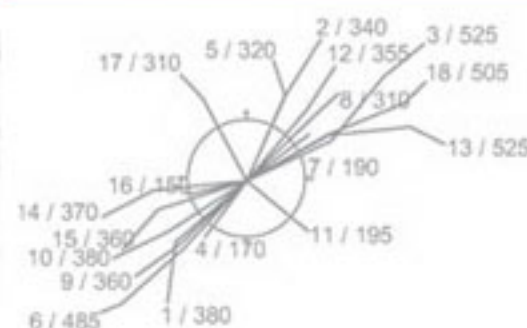
Scorecard Holes 1-18						
Hole#	PAR	MEN CH	MEN ST	LADIES CH	LADIES ST	FRONT
1a	4	380	353	333	309	285
2a	4	340	317	299	278	254
3a	5	525	488	459	425	394
4a	3	170	159	149	138	128
5a	4	320	299	279	260	241
6a	5	485	451	424	394	367
7a	3	190	177	160	155	133
8a	4	310	287	270	251	230
9a	4	360	335	315	293	269
Total 1 - 9	36	3060	2868	2688	2504	2301
10a	4	380	353	333	310	285
11a	3	195	179	170	157	142
12a	4	355	331	311	286	265
13a	5	525	487	460	425	395
14a	4	370	344	324	301	278
15a	4	360	335	315	294	270
16a	3	150	140	130	123	108
17a	4	310	288	269	252	234
18a	5	505	472	441	411	379
Total 10 - 18	36	3150	2927	2756	2589	2356
Total 1 - 18	72	6210	5795	5444	5093	4657

Clubhouse

Safety buffer 60m

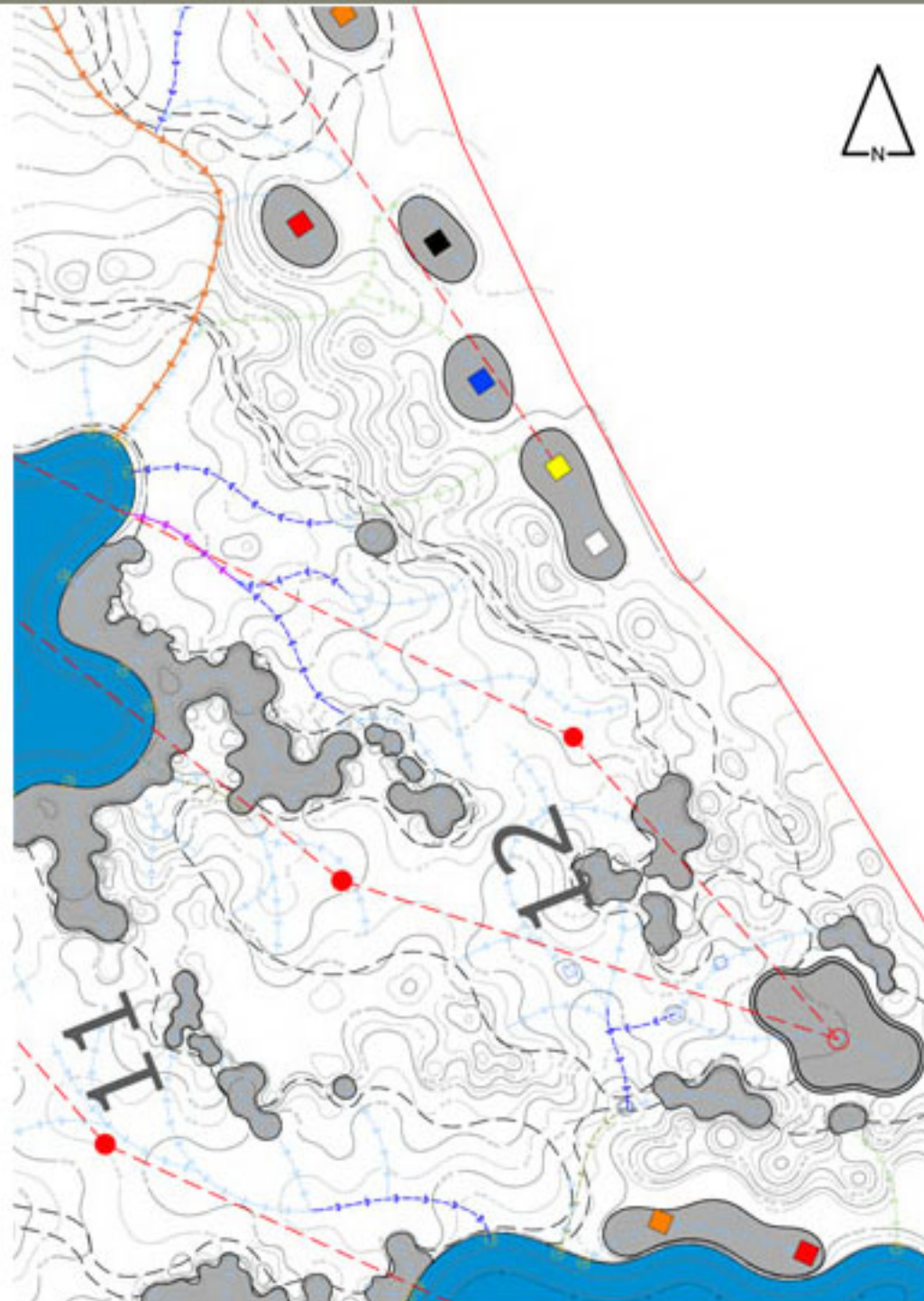
Safety buffer 40m

DIRECTION OF HOLES



Range of Services

Grading & Drainage Plan



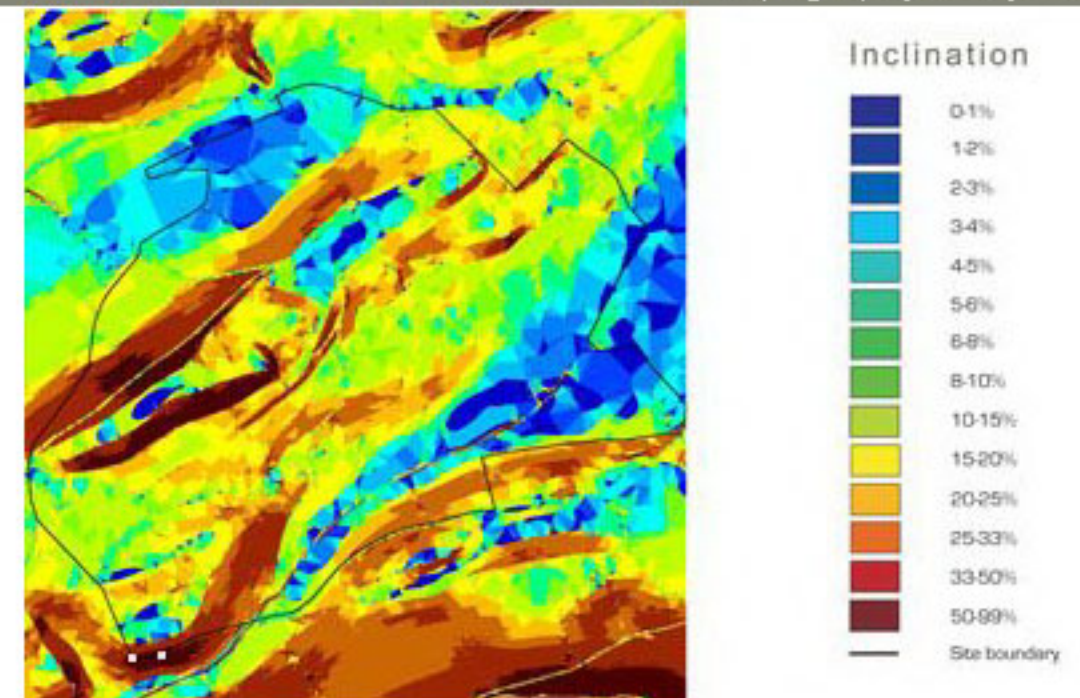
Golf Course, Croatia

Staking Plan



Rosa Private GC, Czestochowa, PL

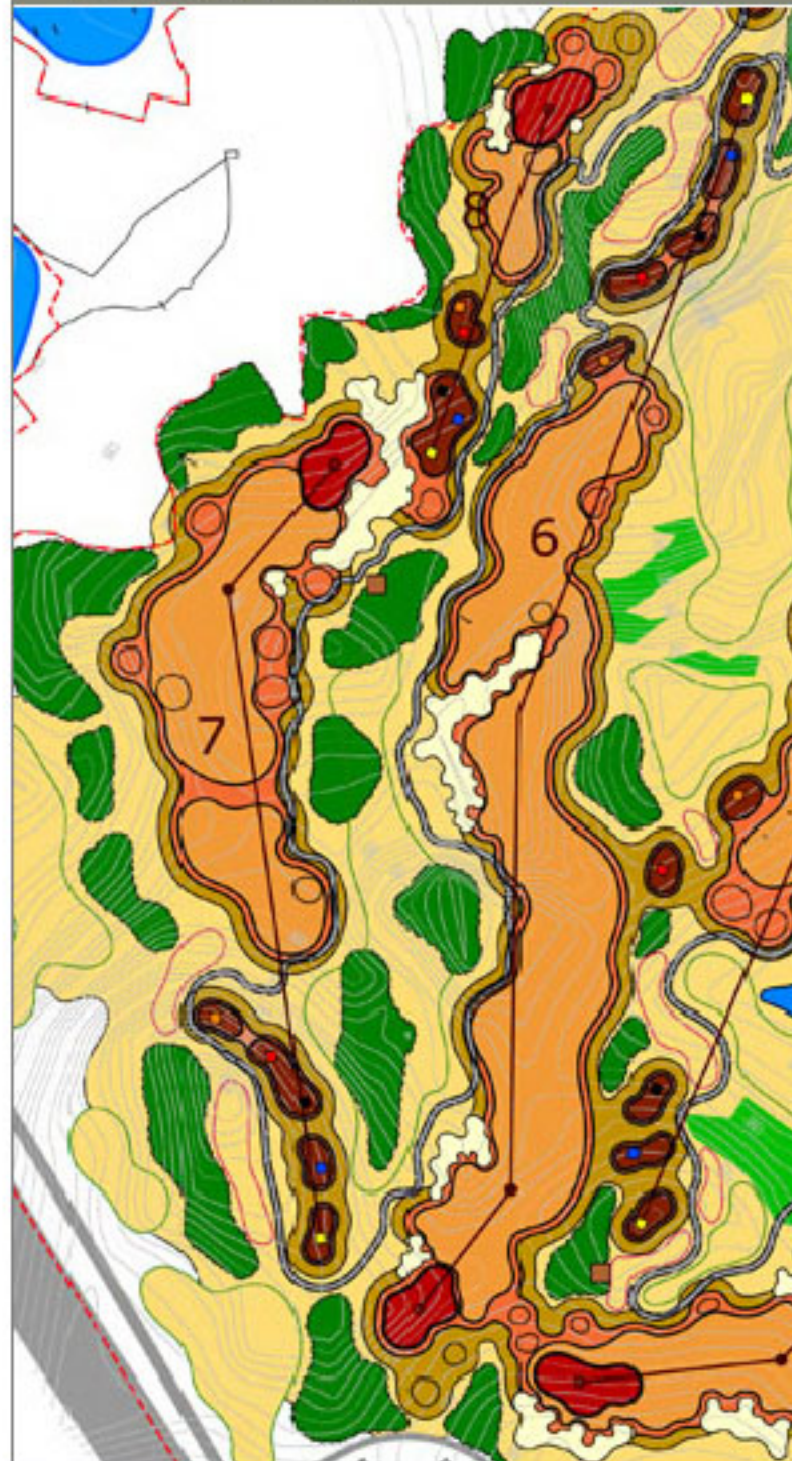
Topography Analysis



Golf Course in Austria

Range of Services

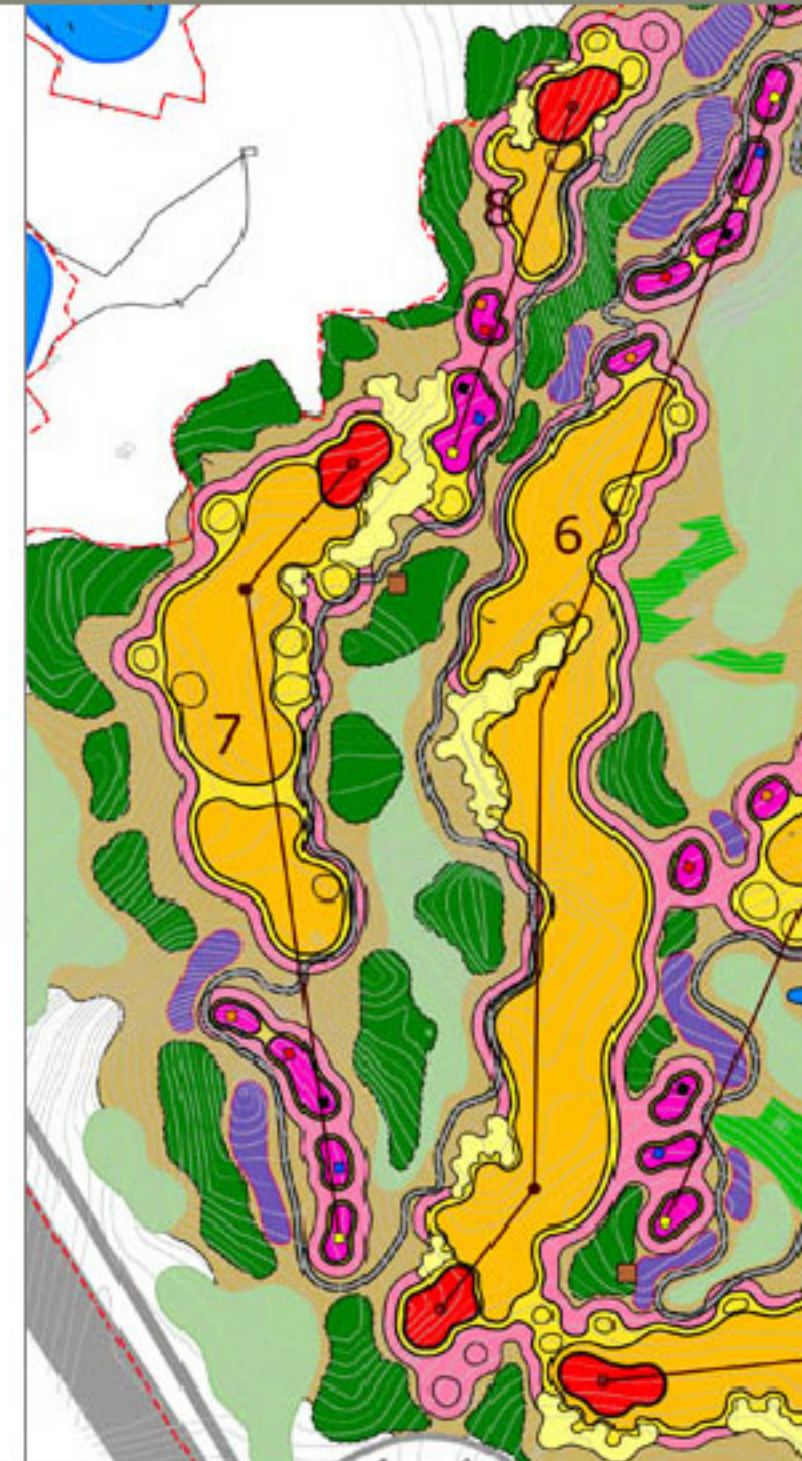
Root zone media



Legend

- Tee: 20 cm Root Zone Mix according to specification
- Green: 30 cm Root Zone Mix, 10 cm Pea Gravel according to specification
- Fairway: 0 cm Top Soil, 20 cm Sand Capping
- Semirough: 12 cm Top Soil, 8 cm Sand Capping
- Maintained Rough: 20 cm Top Soil
- Unmaintained Rough including Landscaped areas and Grassland: 20 cm Top Soil
- Water
- Existing woodland
- Proposed woodland
- Property line

Grassing Plan



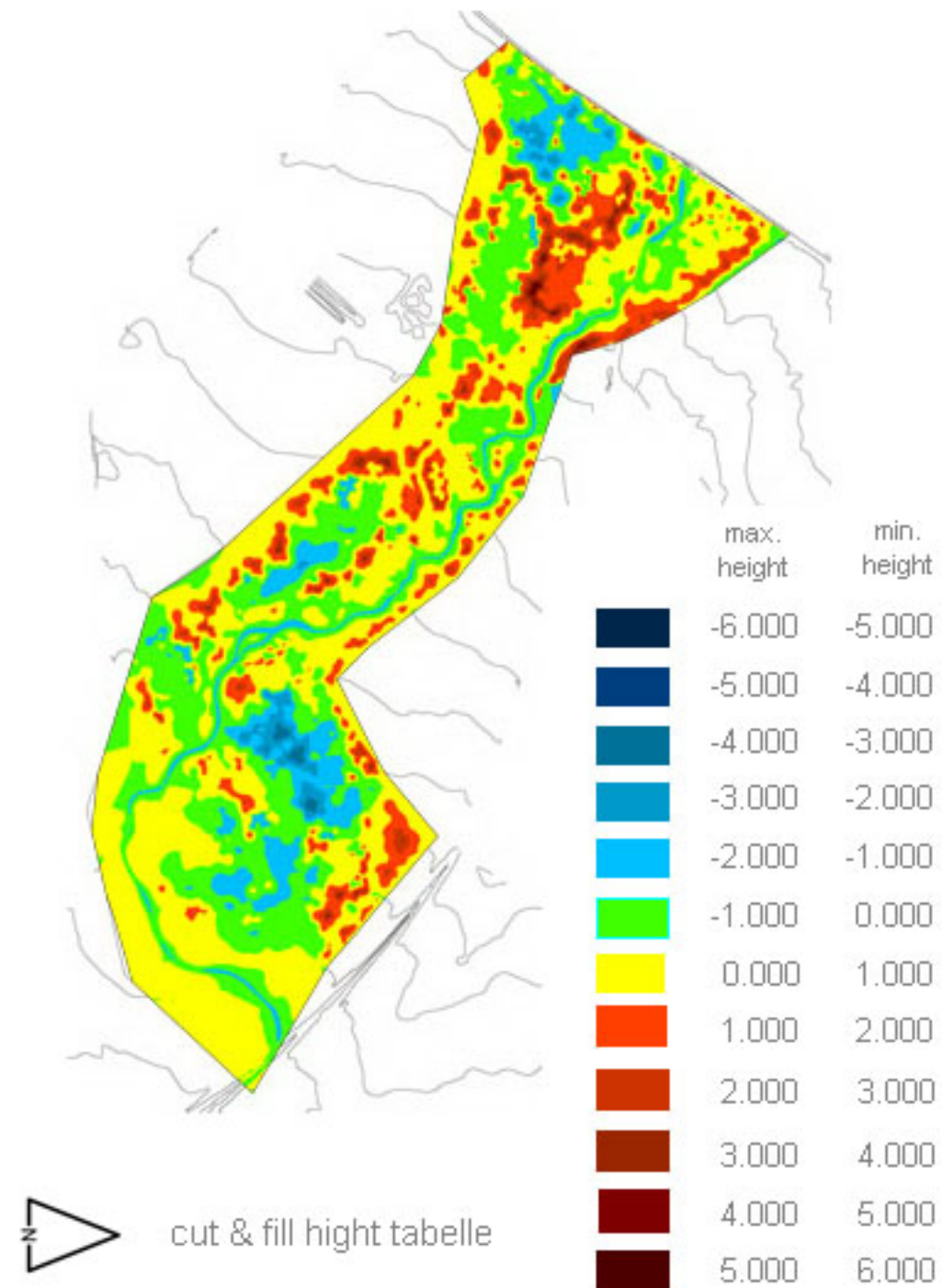
Legend

- Tee
- Green
- Fairway
- Semirough
- Maintained Rough
- Unmaintained Rough
- Landscaped areas with floral aspects:
- Grassland with local species
- Other areas
- Water
- Existing woodland
- Proposed woodland
- Property line



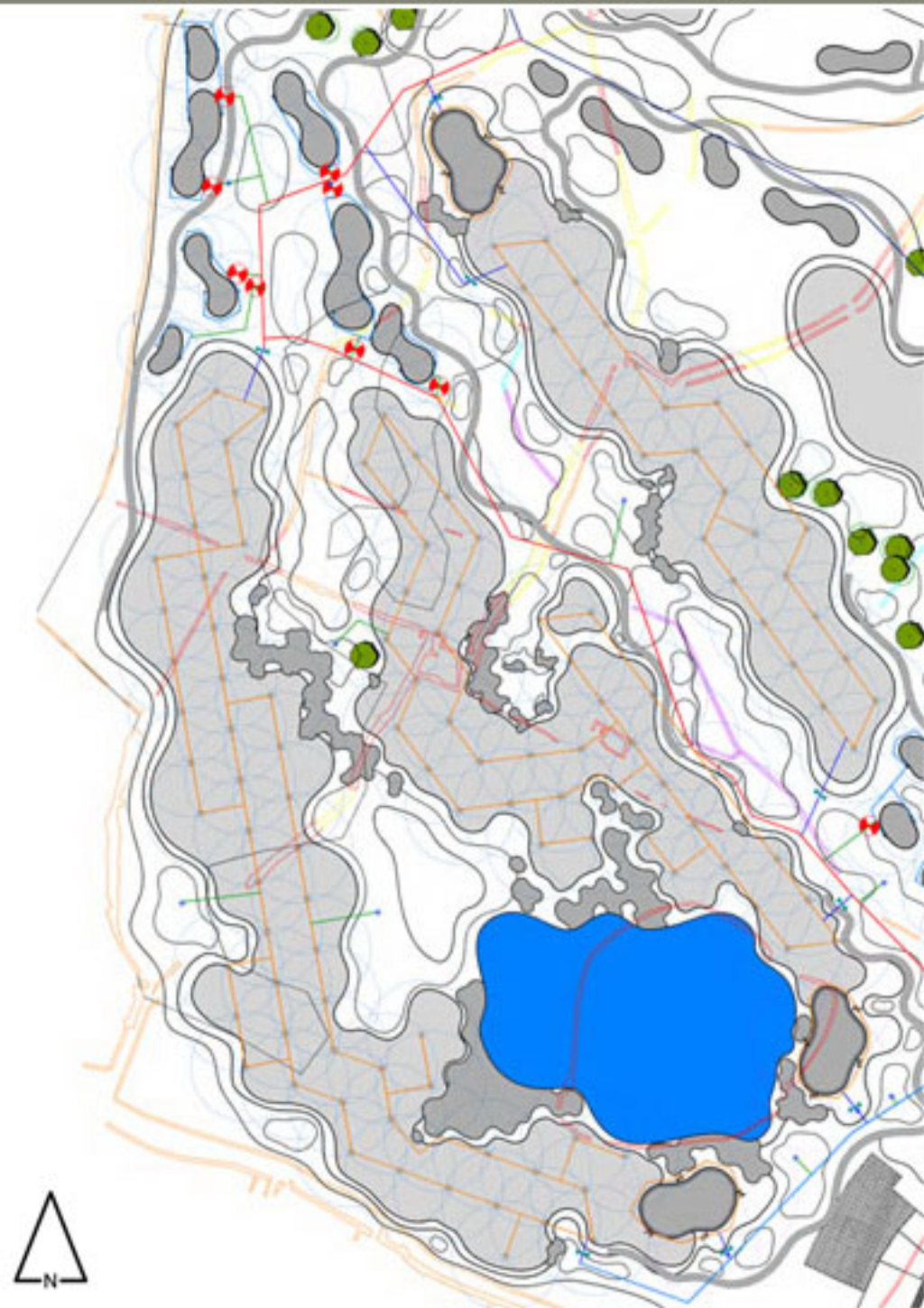
Range of Services

Cut & Fill Plan



Vinea GC, Ritzing, A

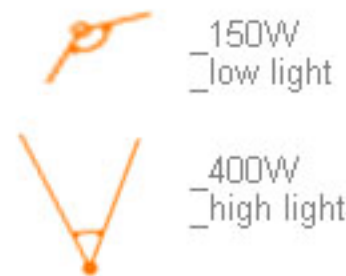
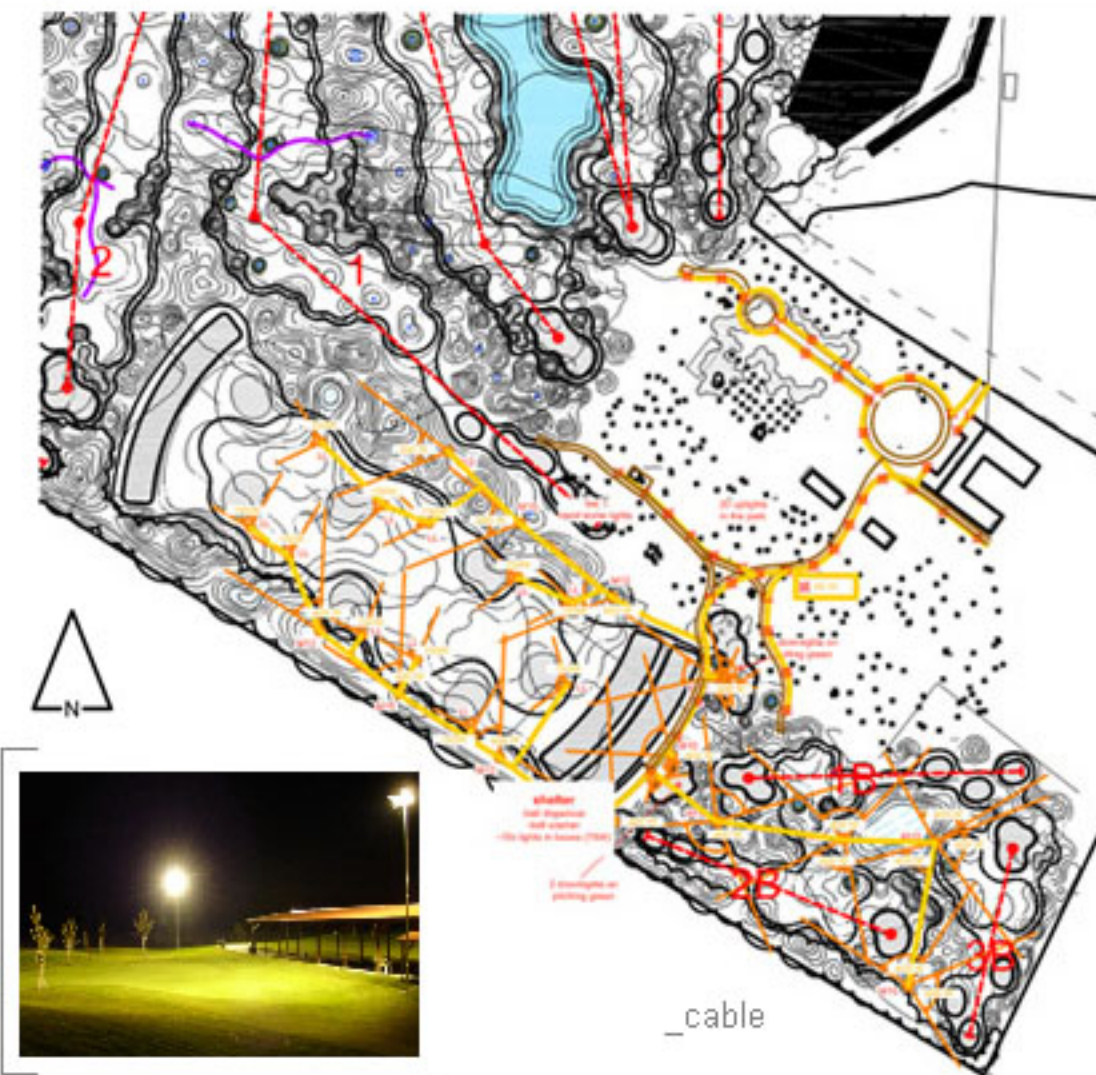
Irrigation Plan



Golf Course in Croatia

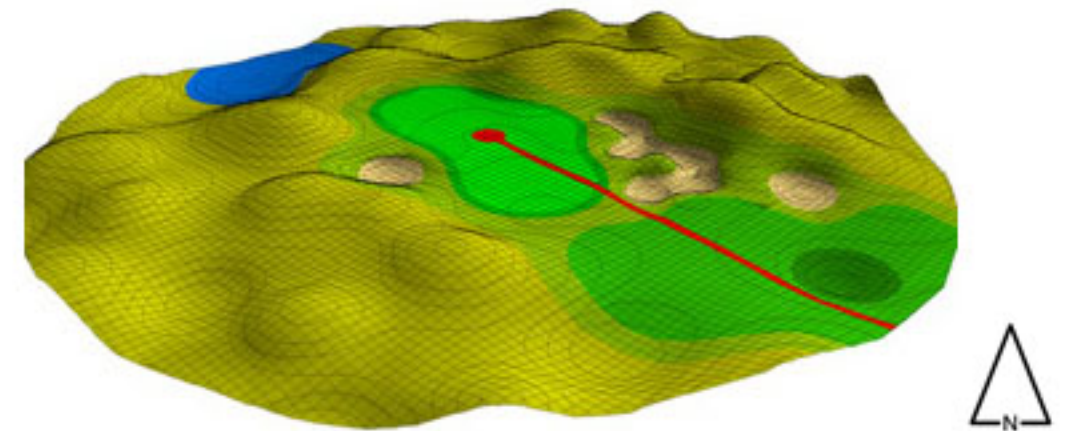
Range of Services

Lighting Plan



Welten GC, Bac, SK

Green Detail

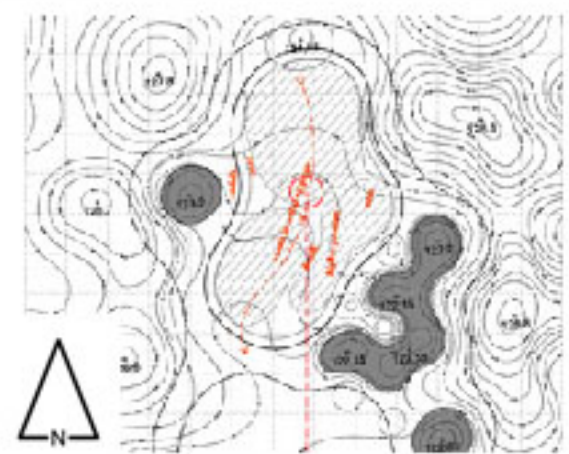


Green 1_BAC



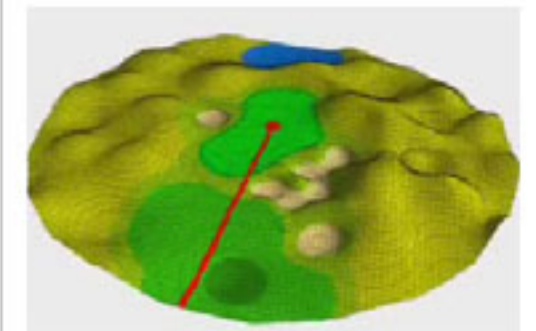
3D - Visualisation

Green Grading Plan



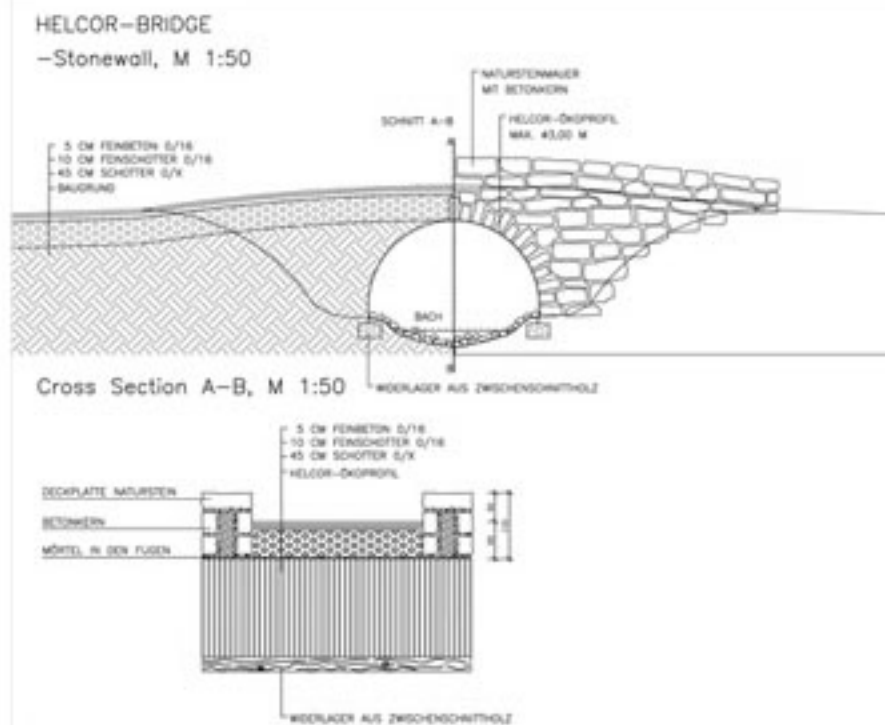
Welten GC, Bac, SK

3D - Visualisation

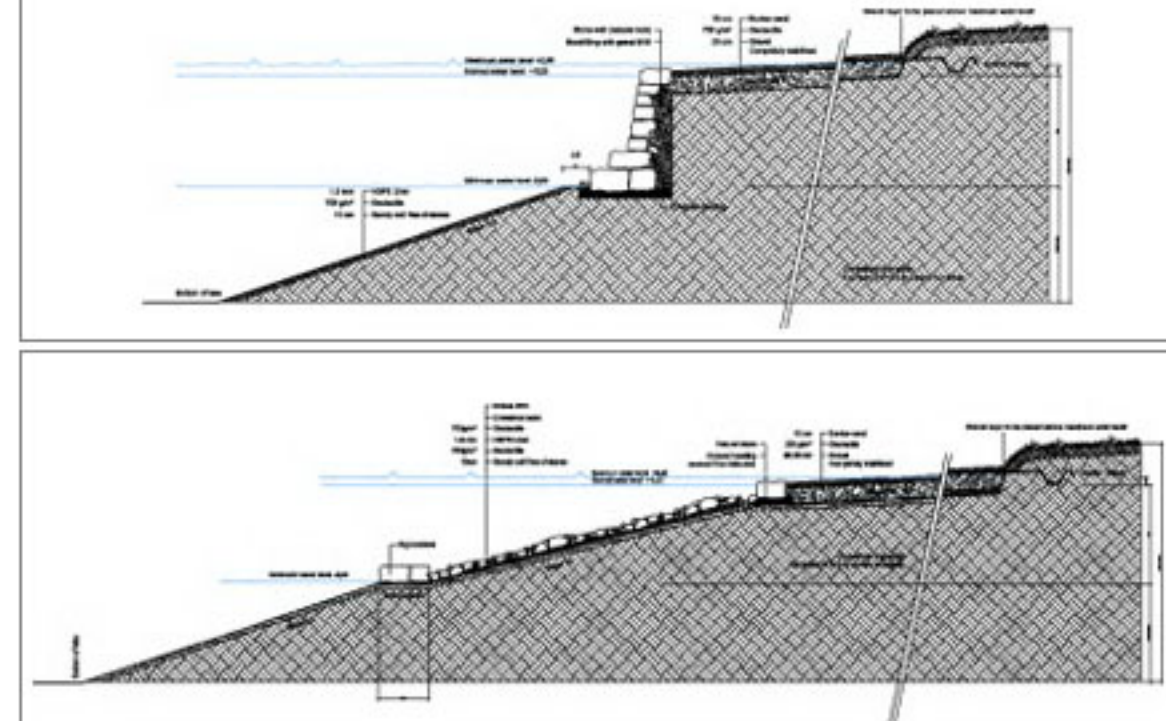


Range of Services

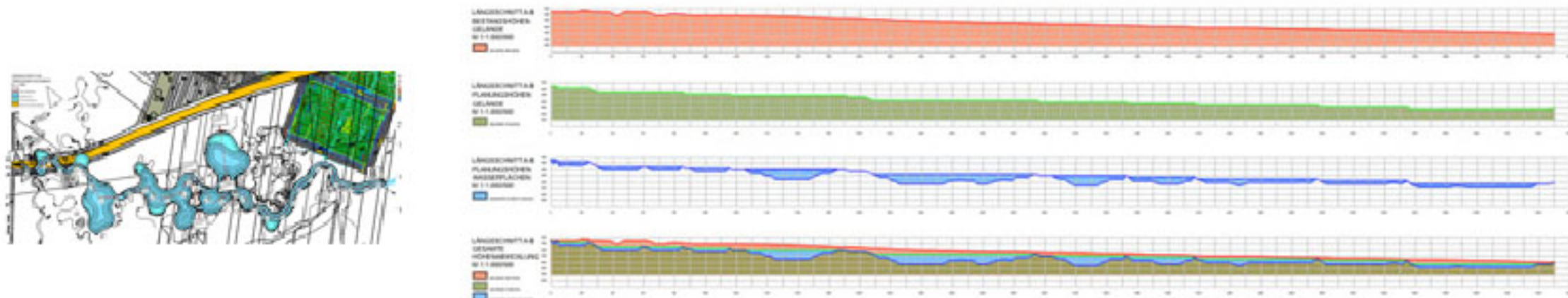
Helicore Bridge Detail



Lake Egde Treatment Detail

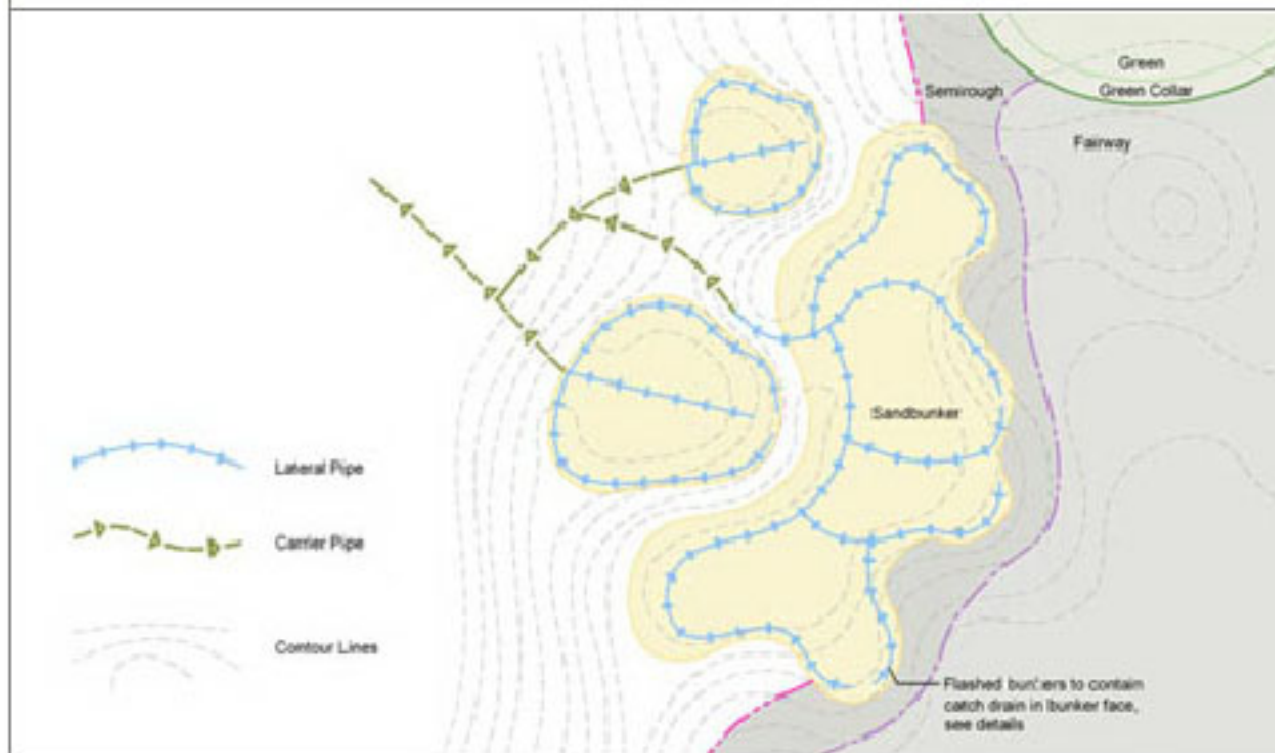


Cross-Section

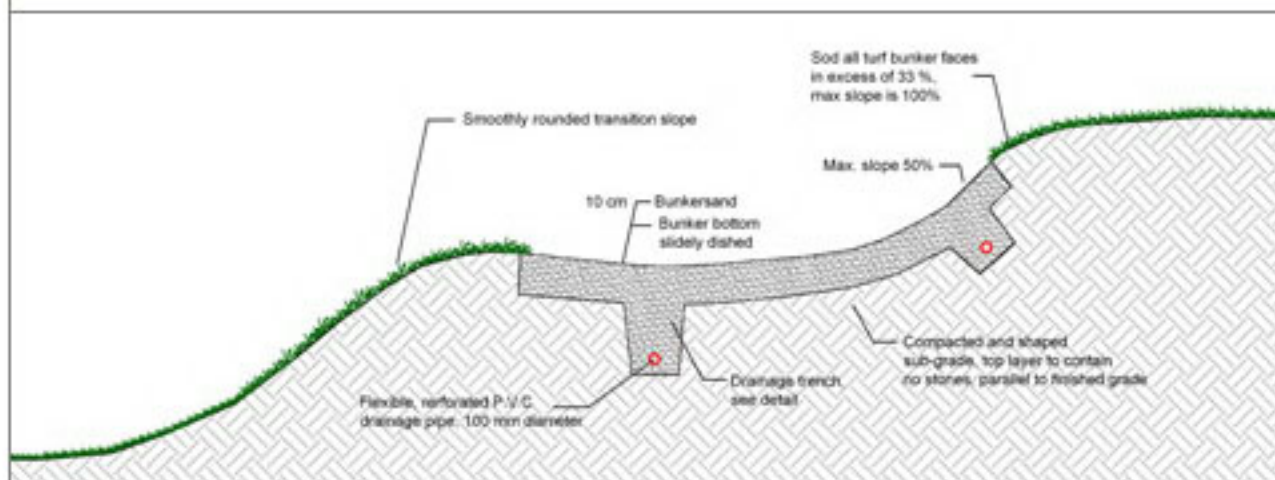


Range of Services

Bunker Drainage Scheme



Flashup Bunker Detail



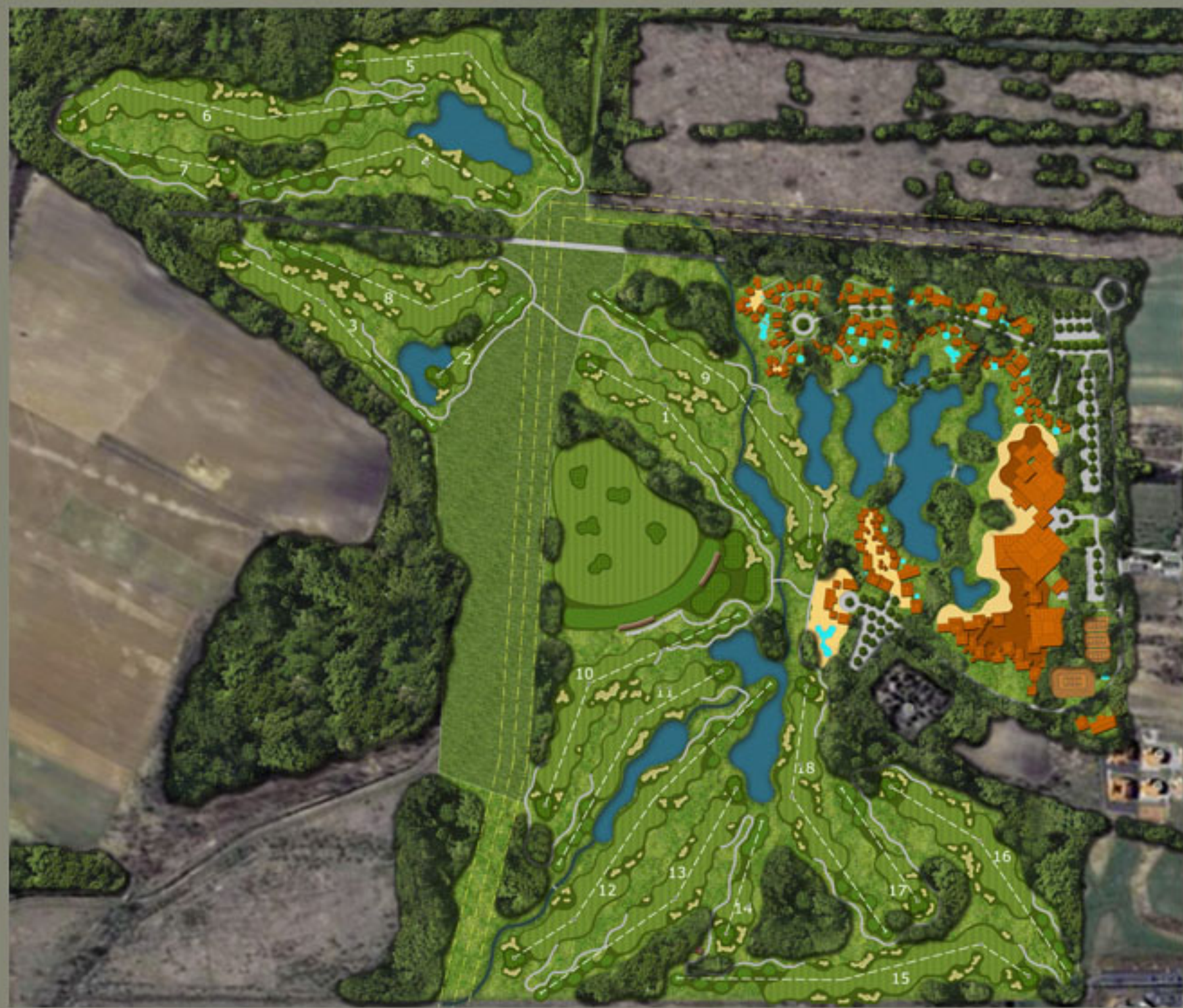
Bunker Studies





Masterplan

Masterplan



Golf Course in Hungary

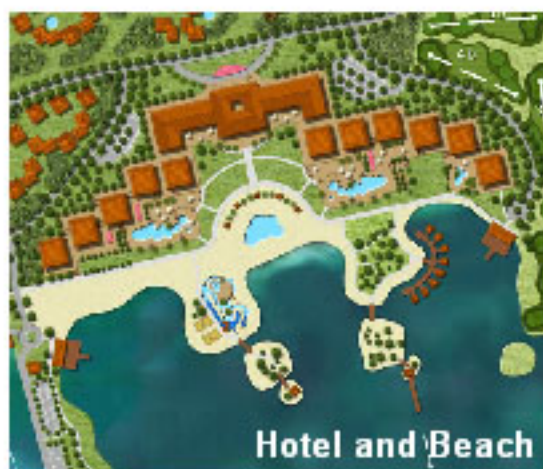
Masterplan



Driving Range and Clubhouse



Marina



Hotel and Beach



Villas

Masterplan



Golf Course in the Slovak Republic

Masterplan



Golf Course in Austria

Masterplan



Masterplan



Golf Course in the Dominican Republic

Masterplan



Masterplan



Golf Course in Austria



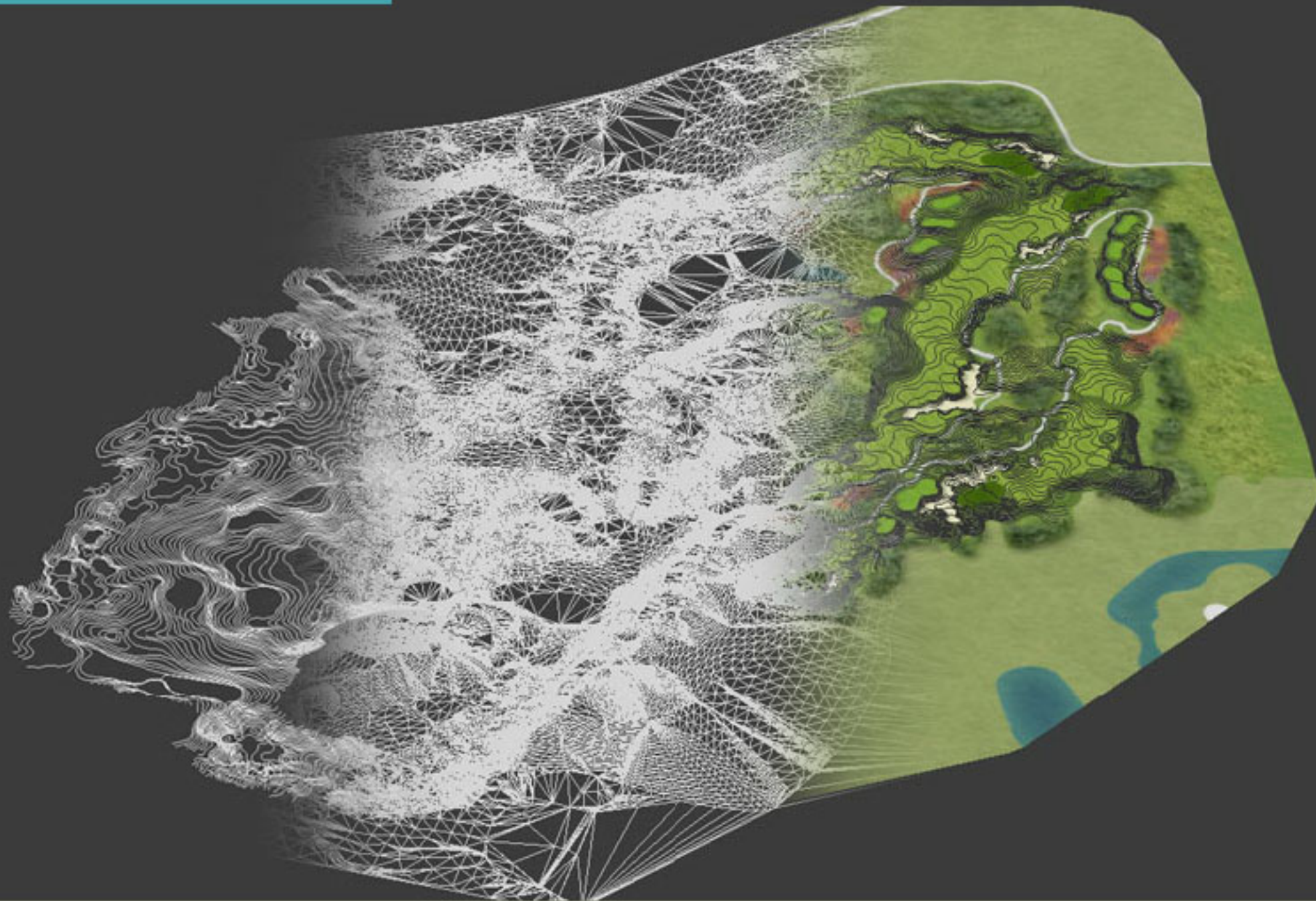
Visualisation

3D Visualisation

DTM with Textures

Digital Terrain Modell

Contour Lines



Golf Course in China

3D Visualisation



Welten GC, Bac, SK

3D Visualisation



Welten GC, Bac, SK

Simulator screenshots



Simulator screenshots



Simulator screenshots



Golf Course in Austria



Golf Course in the Dominican Republic

Simulator screenshots



Golf Course in Croatia

Play strategy



Par 5 - 485 m



Par 5 - 525 m



Par 3 - 170 m



Par 4 - 370 m

Photoshop images





Gallery

Gallery



Gallery



Gallery



Gallery



Gallery



Contact Us



DI Hans-Georg Erhardt

Member of the European Institute
of Golf Course Architects



Member of the Austrian
Landscape Architects ÖGLA



GOLF&LAND
DESIGN

GOLF&LAND
DESIGN

Porschestrasse 7
A-4400 Steyr, Austria

Tel.: +43-7252-46022
Fax.: +43-7252-46022-22

office@golf-land-design.com
www.golf-land-design.com

